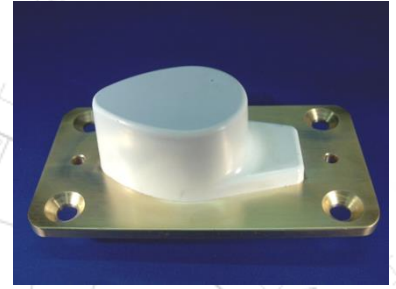


# WLE1055A Multiband Omni-Antenna with GPS Patch

- For train applications
- Multiband structure: linear polarized
- Nominal +3dBi gain
- N or TNC connector interfaces
- Kathrein standard socket compatible

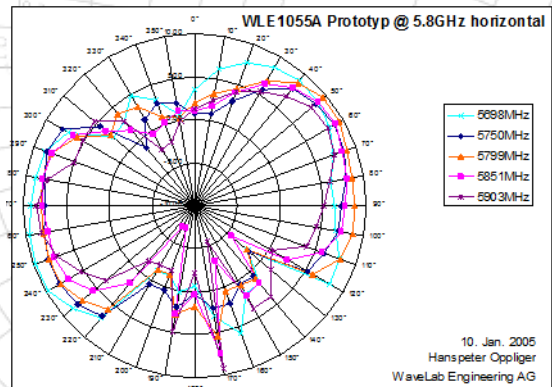
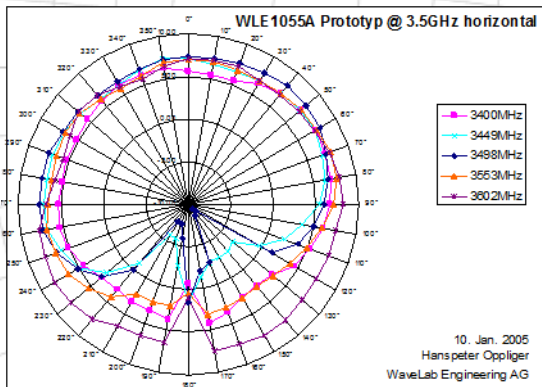
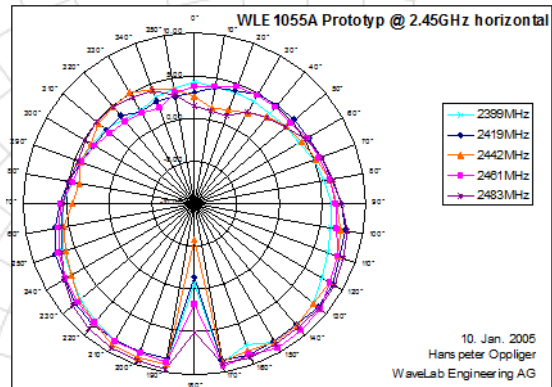
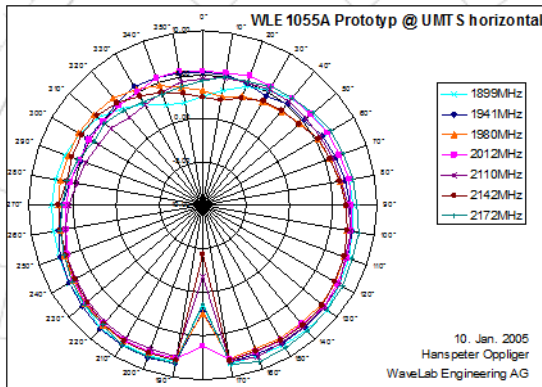
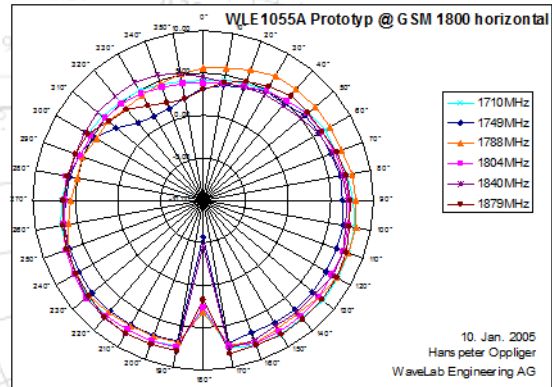
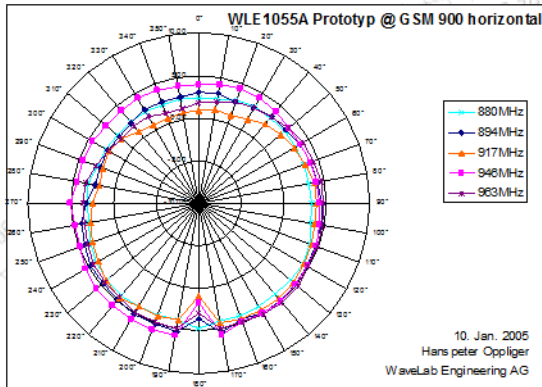


| Item                     |                                             | Value                   | Unit            |      |
|--------------------------|---------------------------------------------|-------------------------|-----------------|------|
| Technical specifications | Operating frequency bands multiband section | TX or RX                | 800 to 3000 *)  | MHz  |
|                          | Gain multiband section                      | min.                    | 2.5             | dBi  |
|                          | Vertical beam width multiband section       | 3dB points              | > 30            | °    |
|                          | VSWR multiband section and GPS              | max.                    | 2.5 : 1         |      |
|                          | Impedance multiband section and GPS         |                         | 50              | Ohm  |
|                          | Power rating multiband section              | max.                    | 20              | W    |
|                          | Polarization multiband section              |                         | linear vertical |      |
|                          | Antenna connector multiband section         | Standard configuration  | N(f) at rear    |      |
|                          | Operating frequency bands GPS section       |                         | 1575.42 +/-1    | MHz  |
|                          | Gain GPS section                            | min.                    | 5               | dBi  |
|                          | Vertical beamwidth GPS section              | 6dB points              | > 120           | °    |
|                          | Power rating GPS section                    | max.                    | 5               | W    |
|                          | Polarization GPS section                    |                         | RHCP            |      |
|                          | Antenna connector GPS section               | Standard configuration  | N(f) at rear    |      |
|                          | Temperature range                           | Usage                   | -40..+70        | °C   |
|                          |                                             | Storage                 | -40..+85        | °C   |
|                          | Humidity                                    | condensing              | 100             | %    |
|                          | Rain                                        |                         | IP68            |      |
|                          | Wind resistance                             |                         | 250             | km/h |
|                          | Color                                       |                         | Light grey      |      |
| Dimensions               | approx.                                     | 130x65x42               | mm              |      |
| Weight                   | approx.                                     | 1.0                     | kg              |      |
| Mounting                 |                                             | 4 screws                |                 |      |
| Test standard            |                                             | EN 50155 and EN 50124-1 |                 |      |

\*) Band selective tuning for higher frequencies upon request.



**Horizontal antenna patterns:**



**Vertical antenna patterns:**

